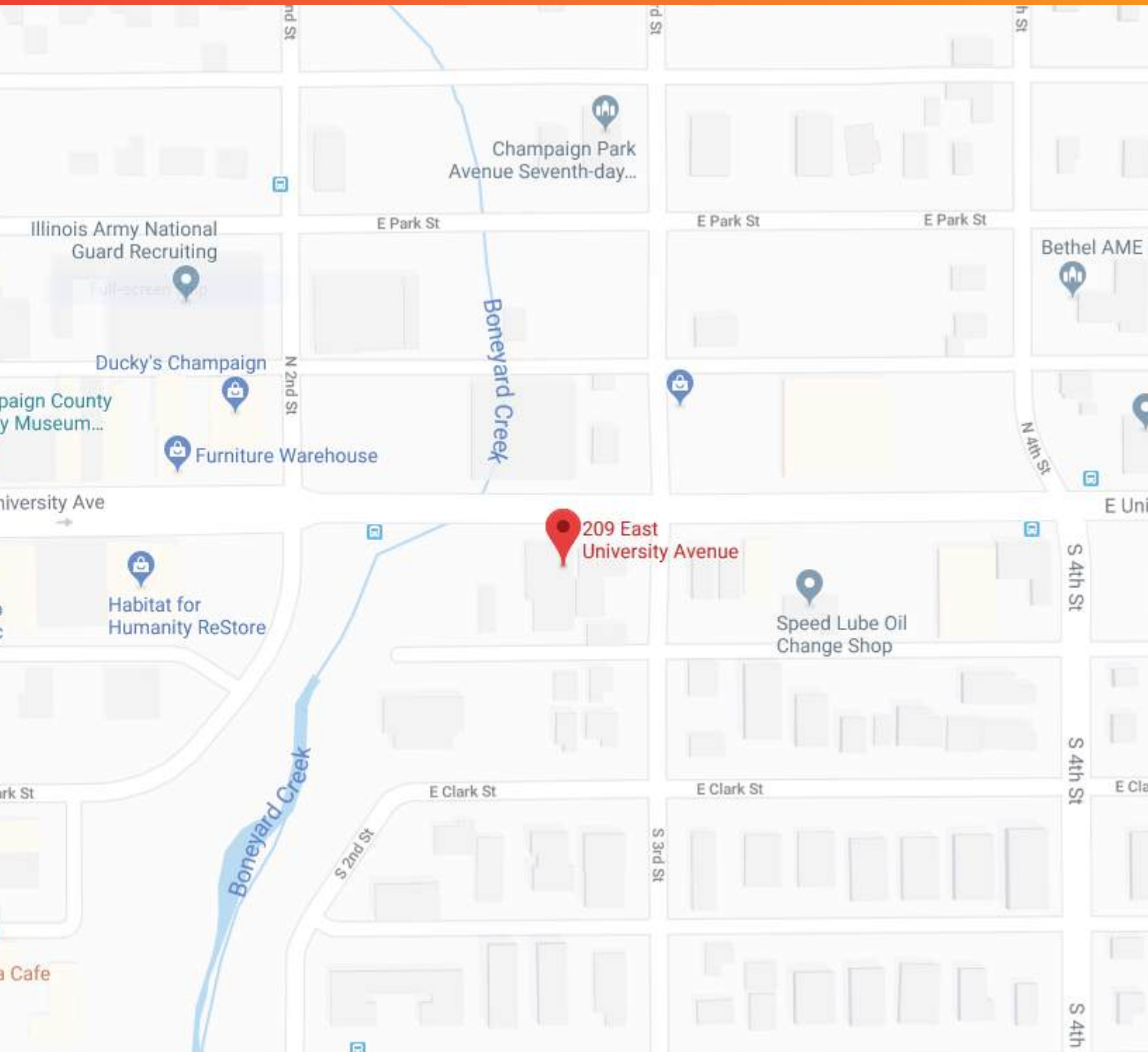




**STUDIOS
1, 2, & 4
BEDROOM
UNITS**

**209 E UNIVERSITY AVE
CHAMPAIGN, IL 61820**



SUPER LOCATION AT UNIVERSITY AVE & 3RD ST. CLOSE TO DOWNTOWN CHAMPAIGN & CAMPUS, THIS LOCATION IS PERFECT FOR EVERYONE.

JUST A FEW BLOCKS AWAY FROM THE BUS TERMINAL.

THIS BUILDING FEATURES HUGE WINDOWS WHICH GIVES YOU AN AMAZING VIEW.

E UNIVERSITY

BUILDING MAP

- STUDIO
- 1 BEDROOM
- 2 BEDROOMS
- 4 BEDROOMS

- 1 STORAGE
- 2 REC ROOM

2nd Floor



3rd Floor



4th Floor



greenstrealty.com

209 EAST UNIVERSITY AVENUE
CHAMPAIGN, IL 61820

STUDIO/1 BATH



UNITS

203, 205, 206, 207, 212, 213, 214, 216, 218, 221,
222, 224, 229, 303, 305, 306, 307, 312, 313, 314,
316, 318, 321, 322, 324, 329, 403, 405, 406, 407,
412, 413, 414, 416, 418, 421, 422, 424, 429

406

SQ FEET

1 BEDROOM/1 BATH

F



UNITS

F-613 SQ FEET

F

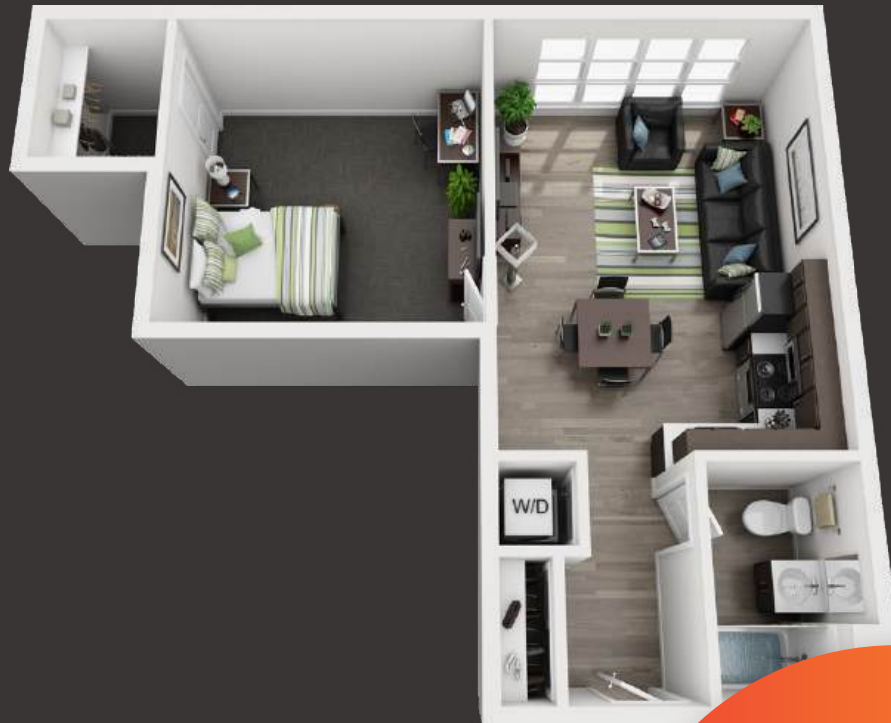
215, 217, 223, 225, 227, 232, 315, 317, 323,
325, 327, 332, 415, 417, 423, 425, 427, 432

1 BEDROOM/1 BATH

H



H2



UNITS

H

H- 211, 311, 411

H2

202, 302, 402

H-711 SQ FEET

H2-637 SQ FEET

2 BEDROOM/1 BATH

B



C



UNITS

B

208, 308, 408

C

209, 220, 226, 230, 309, 320,
326, 330, 409, 420, 426, 430

B-782 SQ FEET

C-712 SQ FEET

2 BEDROOM/1 BATH

D



E



UNITS

D

228, 328, 428

E

231, 331, 431

D-857 SQ FEET

E-678 SQ FEET

2 BEDROOM/1 BATH



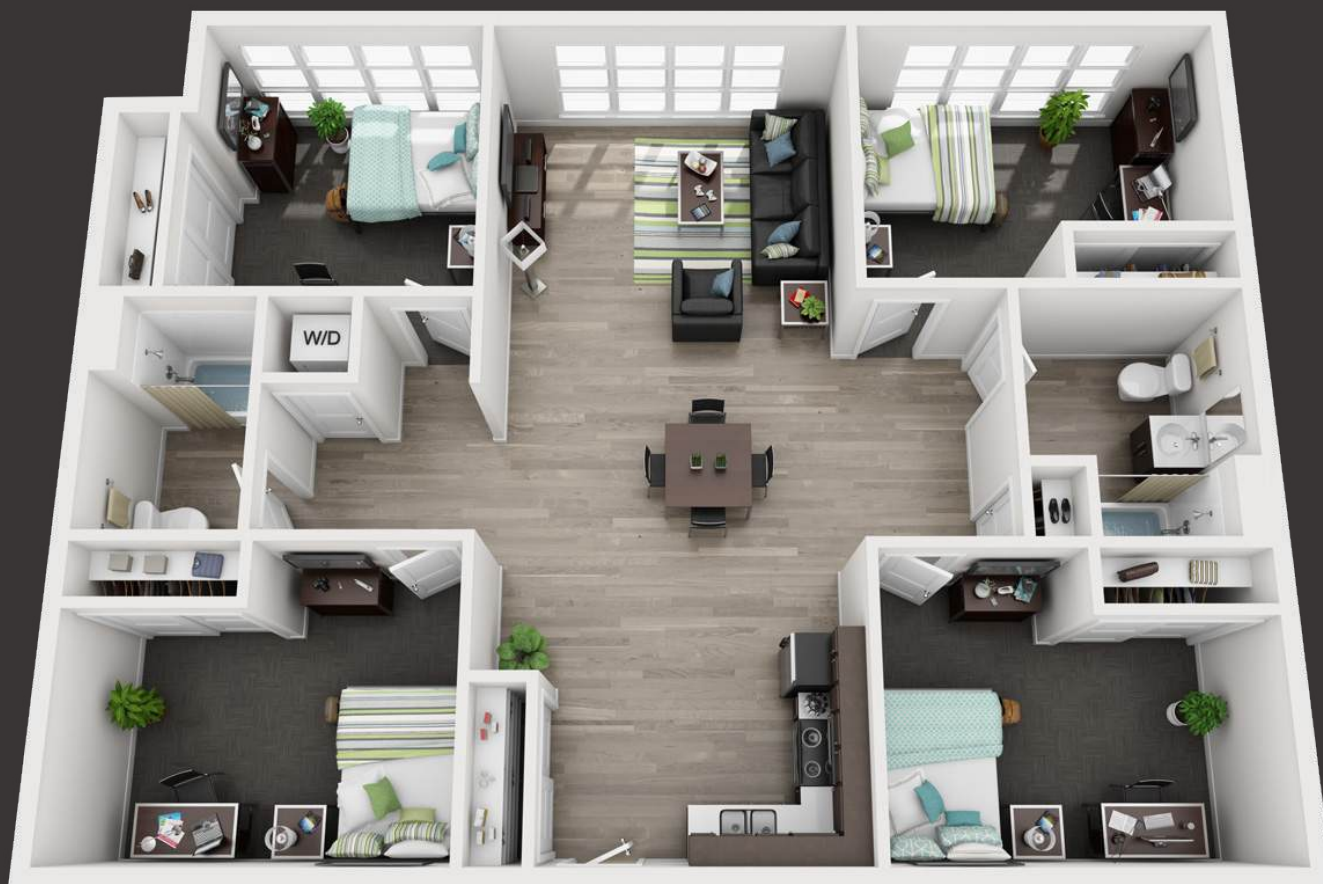
UNITS

1 201, 204, 301, 304, 401, 404

1-889 SQ FEET

4 BEDROOM/2 BATH

G



UNITS

G-1,294 SQ FEET

G

219, 319, 419





ASK ABOUT OUR SAME DAY
SIGNING SPECIALS

FREE APPLICATION
IF YOU BRING THIS WITH YOU



UNIVERSITY COMMONS WAS BRAND NEW IN 2018 & TAKES UP THE WHOLE BLOCK OF 2ND & 3RD ST ON UNIVERSITY AVE & IS CLOSE TO THE ENGINEERING QUAD. THIS BUILDING FEATURES LUXURY UNITS OF STUDIOS, 1, 2, & 4 BEDROOM UNITS. AMENITIES INCLUDE A FITNESS CENTER, STUDY ROOM, SECURE ENTRY, PARKING AVAILABLE, TVS IN ALL UNITS, HIGH SPEED FIBER INTERNET, & MORE! ALL HIGH END FINISHES INCLUDING GRANITE COUNTERTOPS, PLANK FLOORING, STAINLESS STEEL APPLIANCES, & MORE. ALL UTILITIES INCLUDED WITH A CAP ON ELECTRICITY.