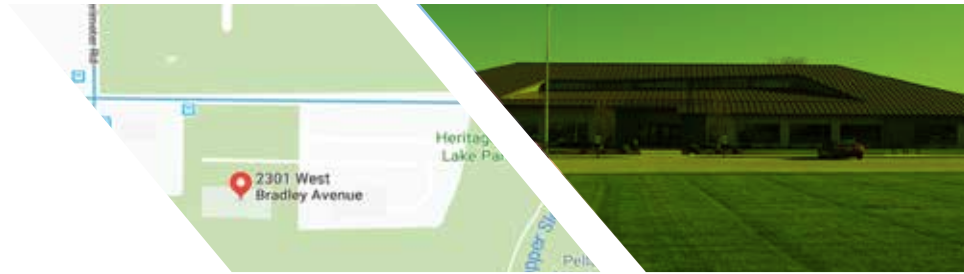


**2301 W. BRADLEY AVE
CHAMPAIGN, IL**

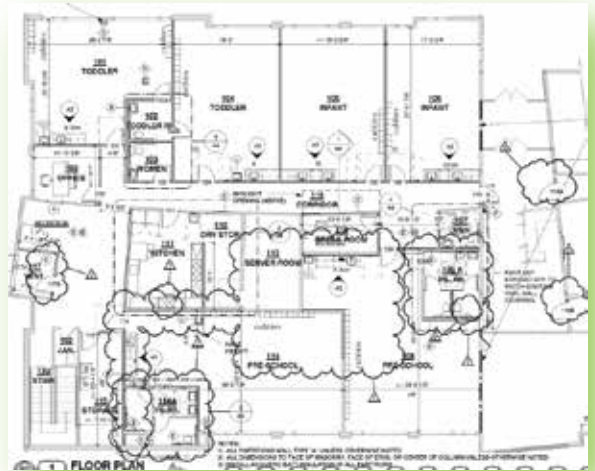
**AVAILABLE
NOW**



**COMMERCIAL SPACE
AVAILABLE**



- 6500 SQ FT AVAILABLE
- CO-TENANT WITH SUB4 DEVELOPMENT
- IDEAL FOR SCHOOL OR DAYCARE W/ AN ADDED 1500 SQ FT OUTDOOR PLAY AREA
- NEWLY REMODELED TO OFFER 6 OFFICES OR CLASSROOMS
- GREAT SPACE THAT HAS POTENTIAL TO MEET YOUR NEEDS



VIEW ONLINE @
WWW.GREENSTREALTY.COM

SHANNON COLLINS

217-493-3776 or
SHANNON.COLLINS@GREENSTREALTY.COM

